



December 17, 2007
Release: Series 8 Release 31

For immediate release
TSX Venture: TDC

TYHEE REPORTS ADDITIONAL NICHOLAS LAKE DIAMOND DRILL RESULTS, INCLUDING 6.927 GRAMS OF GOLD PER TONNE OVER 31.0 METRES WITH 49.204 GPT OVER 3.5 M IN NU019, TWO ADDITIONAL HOLES COMPLETED ON BIGSKY EXPLORATION TARGET.

VANCOUVER, British Columbia (Monday, December 17, 2007)-- Tyhee Development Corp. (TSX Venture, TDC) (the "Company") today announced results from an additional 25 diamond drillholes from Nicholas Lake Main Zone. The results continue to be as expected, with some high-grade values over moderate widths and some broader areas of moderate-grade material. Additionally, tungsten-rich sections continue to be encountered on the property. These will be assessed in a resource estimate planned in early 2008. Significant intersections **include 6.927 grams of gold per tonne (gpt) over 31.0 metres (m)** in NU019, **1.130 gpt gold over 109.0 m** in NU022 and **3.235 gpt gold over 28.5 m** in NU028.

Table 1. Recent results from the resampling of Nicholas Lake Main Zone.

| Diamond Drillhole | From (metres) | To (metres) | Width (metres) | Gold Grade (grams per tonne) |
|--------------------------|----------------------|--------------------|-----------------------|-------------------------------------|
| N027 | 9.2 | 10.7 | 1.5 | 8.000 |
| and | 12.0 | 13.5 | 1.5 | 5.709 |
| and | 71.5 | 75.7 | 4.2 | 8.252 |
| and | 84.5 | 86.4 | 1.9 | 24.862 |
| and | 146.2 | 150.2 | 4.0 | 5.517 |
| N077 | 41.0 | 47.0 | 6.0 | 2.144 |
| N093 | 123.5 | 124.5 | 1.0 | 6.247 |
| and | 138.0 | 139.5 | 1.5 | 3.546 |
| and | 159.5 | 164.0 | 4.5 | 1.699 |
| and | 207.5 | 219.5 | 12.0 | 4.066 |
| and | 270.5 | 289.5 | 19.0 | 1.199 |
| N094 | 156.0 | 157.5 | 1.5 | 6.033 |
| and | 187.5 | 201.5 | 14.0 | 4.793 |
| and | 220.0 | 241.0 | 21.0 | 1.713 |
| and | 263.5 | 280.0 | 16.5 | 0.896 |
| N097 | 58.0 | 63.0 | 5.0 | 3.395 |
| and | 86.5 | 88.0 | 1.5 | 9.900 |
| and | 120.5 | 126.5 | 6.0 | 2.062 |
| N112 | 161.0 | 162.0 | 1.0 | 1.847 |
| NU001 | 24.5 | 36.5 | 12.0 | 1.860 |
| and | 45.0 | 47.0 | 2.0 | 11.669 |
| and | 62.0 | 81.0 | 19.0 | 1.137 |
| NU002 | 4.0 | 20.0 | 16.0 | 2.997 |
| and | 47.0 | 58.7 | 11.7 | 1.902 |
| NU005 | 1.5 | 26.0 | 24.5 | 1.564 |
| incl | 10.0 | 23.0 | 13.0 | 2.379 |

| | | | | |
|--------------|--------------|--------------|--------------|---------------|
| NU008 | 2.5 | 8.5 | 6.0 | 3.494 |
| NU012 | 19.5 | 25.0 | 5.5 | 1.632 |
| incl | 23.5 | 25.0 | 1.5 | 4.835 |
| and | 34.0 | 37.0 | 3.0 | 3.442 |
| and | 57.5 | 61.4 | 3.9 | 1.658 |
| and | 73.5 | 83.0 | 9.5 | 3.076 |
| NU017 | 33.0 | 47.5 | 14.5 | 2.881 |
| and | 57.0 | 59.5 | 2.5 | 1.423 |
| NU019 | 1.7 | 3.0 | 1.4 | 2.174 |
| and | 67.5 | 98.5 | 31.0 | 6.927 |
| incl | 67.5 | 71.0 | 3.5 | 49.204 |
| NU020 | 22.5 | 27.5 | 5.0 | 1.733 |
| NU022 | 44.0 | 153.0 | 109.0 | 1.130 |
| incl | 62.5 | 104.0 | 41.5 | 1.648 |
| incl | 86.6 | 93.0 | 6.4 | 7.241 |
| NU023 | 27.0 | 29.0 | 2.0 | 2.129 |
| NU024 | 8.0 | 35.4 | 27.4 | 1.355 |
| NU025 | 20.0 | 22.0 | 2.0 | 2.345 |
| and | 31.5 | 33.0 | 1.5 | 2.162 |
| NU026 | 16.0 | 18.0 | 2.0 | 1.394 |
| and | 36.0 | 40.0 | 4.0 | 1.484 |
| NU028 | 31.0 | 33.0 | 2.0 | 14.069 |
| and | 79.5 | 108.0 | 28.5 | 3.235 |
| NU035 | 5.5 | 7.0 | 1.5 | 15.452 |
| and | 96.0 | 102.0 | 6.0 | 5.742 |
| and | 116.0 | 131.5 | 15.5 | 3.936 |

NU007, NU010, NU030 and NU034, did not return any significant gold assays. All NUxxx series holes are drilled from underground.

Significant tungsten values continue to be encountered proximal to the gold mineralization, and may be of economic interest as shown on the table below.

Table 2. Selected tungsten analyses (reported as WO₃) from Nicholas Lake Main Zone.

| Diamond Drillhole | From (metres) | To (metres) | Width (metres) | Tungsten Grade (WO₃%) |
|--------------------------|----------------------|--------------------|-----------------------|---|
| N077 | 24.5 | 31 | 6.5 | 0.041 |
| N027 | 18 | 32.5 | 14.5 | 0.067 |
| N094 | 169.5 | 191.5 | 22 | 0.126 |
| and | 227.5 | 230.5 | 3 | 0.466 |
| NU001 | 28 | 34 | 6 | 0.073 |
| and | 78.5 | 81 | 2.5 | 0.330 |
| NU002 | 9.5 | 11 | 1.5 | 0.550 |
| and | 48.5 | 58.7 | 10.2 | 0.041 |
| NU022 | 91.5 | 93 | 1.5 | 0.776 |
| NU023 | 3 | 22.5 | 19.5 | 0.059 |

| | | | | |
|--------------|-------------|------------|-------------|--------------|
| NU024 | 0.2 | 4 | 3.8 | 0.173 |
| and | 15.5 | 23 | 7.5 | 0.142 |
| NU025 | 2 | 6 | 4 | 0.323 |
| NU026 | 4 | 10 | 6 | 0.047 |
| and | 14.5 | 21 | 6.5 | 0.067 |
| NU028 | 58 | 59.5 | 1.5 | 0.339 |
| and | 97 | 105 | 8 | 0.327 |
| NU030 | 0.2 | 9 | 8.8 | 0.551 |
| NU035 | 106.5 | 108 | 1.5 | 0.117 |
| and | 116 | 122 | 6 | 0.516 |
| NU012 | 7.5 | 9 | 1.5 | 0.131 |
| N093 | 53 | 60.5 | 7.5 | 0.066 |
| and | 84.5 | 89 | 4.5 | 0.045 |
| and | 98.5 | 135 | 36.5 | 0.065 |
| and | 212 | 219.5 | 7.5 | 0.133 |

Dave Webb, Tyhee's president and CEO said "The gold values continue to be in line with expectations. The tungsten values are interesting but need to be evaluated in three dimensions to determine if they will contribute significantly to the overall economics of the project. There are less than a dozen drillhole results remaining to be received until we will be ready to commence a resource estimate using the new data."

The diamond drills are in the process of being shutdown for the holiday season and are planned to be restarted on January 4th, 2008. The diamond drill on the BigSky Property completed an additional two drillholes prior to being moved to its next set-up. Partial assay results from the first two drillholes have been received and the core from drillholes 3 and 4 is being processed in camp. A second drill has been set-up on the BigSky Property and will be ready to start in the new year. A third diamond drill is in Yellowknife, and will be mobilized to the BigSky property in January.

The Company's principal focus is the development of its Yellowknife Gold Project. The Yellowknife Gold Project consists of 6,625 hectares (15,481 acres) of mining leases located 90 km (56 miles) north of Yellowknife. The property hosts several areas of gold mineralization, including the partially developed Nicholas Lake Gold Zone, the Ormsby Zone and the Bruce Lake Zone. A 1.2 million ounce measured and indicated gold resource plus a 353,000 ounces inferred gold resource has been identified on the property as reported June 20, 2007 (News Release S.8 R.11). Additional exploration properties within the Yellowknife Gold Belt, including the Goodwin Lake, Clan Lake, and BigSky Properties have been acquired. Preliminary exploration has confirmed potentially economic gold mineralization on these exploration properties, and initial diamond drilling has commenced or is planned on these properties.

Sample Analysis and QA/QC Program

Tyhee completed fire assays on drill core samples using 30 gram aliquots with ICP-ES finish for gold analyses, prepared at Acme Analytical Laboratories Ltd. in Yellowknife, and finished at Acme Analytical Laboratories Ltd in Vancouver. A semi-quantitative multi-element analysis is run on 0.5 gm aliquot samples leached in a hot aqua regia solution and measured using ICPES techniques. All elevated tungsten values are then reanalysed on 0.5 gm aliquots digested using phosphoric acid and measured using ICP ES techniques. Tyhee conducts a rigorous QA/QC program of inserting blanks and duplicates in the field and standards in the laboratory. The

laboratory also conducted their own independent QA/QC program including inserting their own standards and rerunning samples from pulped material and reject material. These results were provided to Tyhee. All standards, duplicates, blanks and check assays returned acceptable results. Dr. D.R. Webb, PhD, P.Geol., the designated QP within the meaning of NI 43-101, has reviewed this release and approves of its content.

NO REGULATORY AUTHORITY HAS APPROVED OR DISAPPROVED THE CONTENT OF THIS RELEASE. THE TSX VENTURE EXCHANGE DOES NOT ACCEPT RESPONSIBILITY FOR THE ADEQUACY OR ACCURACY OF THIS RELEASE.

Tyhee's shares trade on the TSX Venture Exchange under the symbol "TDC". For additional information, please visit the Company's website, www.tyhee.com.

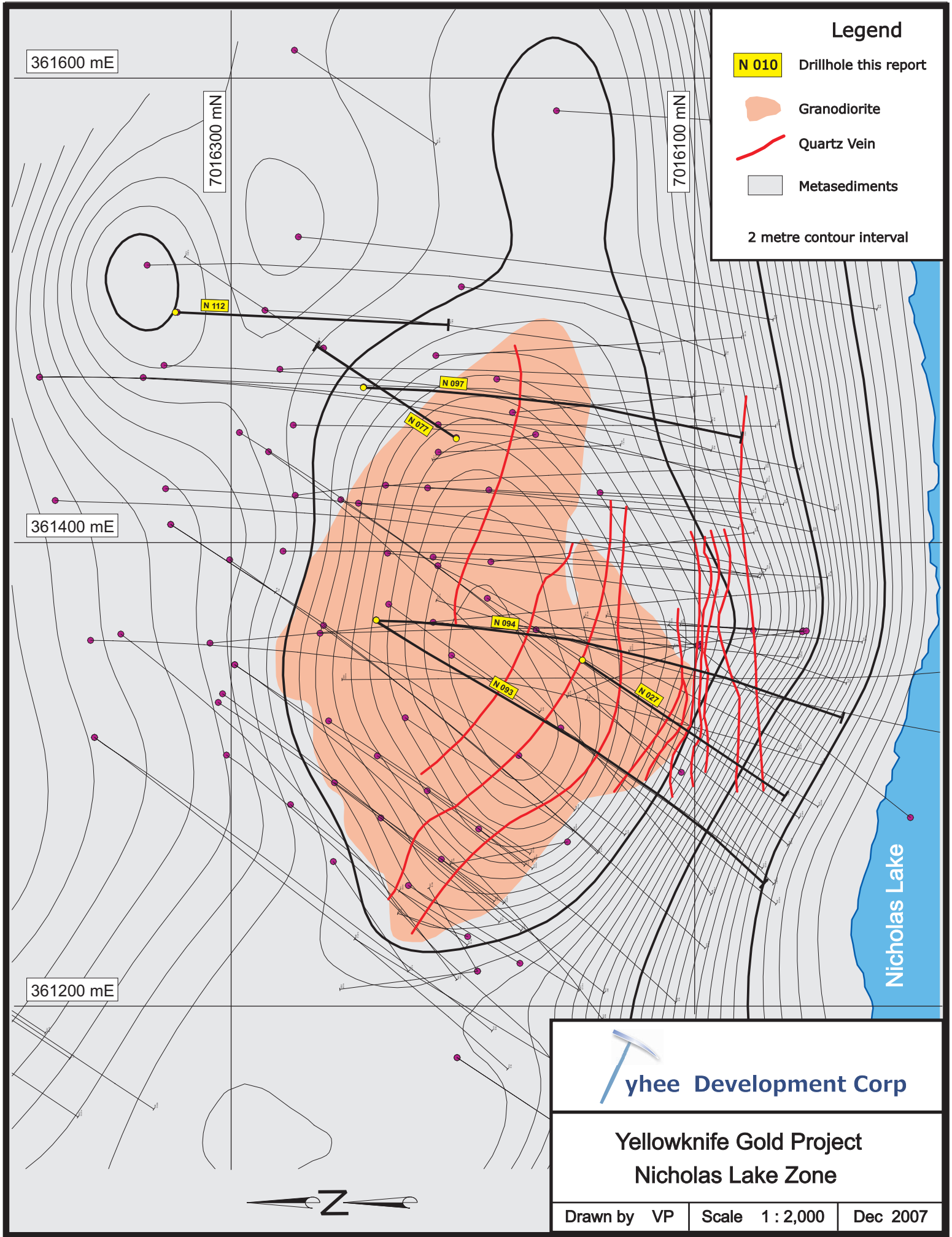
For further information please contact:

Tyhee Development Corp.

David Webb, President and CEO
Tel: 604-681-2877 [toll free 1-866-681-2877]
info@tyhee.com

The Equicom Group Inc.

Michael Joyner
Tel: 416-815-0700 ext 275
mjoyner@equicomgroup.com



Legend

- N 010 Drillhole this report
- Granodiorite
- Quartz Vein
- Metasediments

2 metre contour interval

361600 mE

7016300 mN

7016100 mN

361400 mE

361200 mE

Nicholas Lake



yhee Development Corp

**Yellowknife Gold Project
Nicholas Lake Zone**

Drawn by VP Scale 1 : 2,000 Dec 2007